

Helicoidal fans to be installed in walls or windows.

B



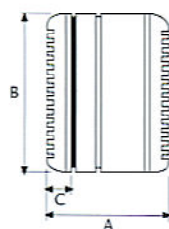
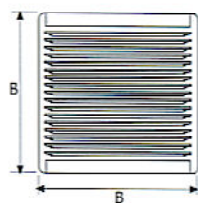
MODEL B

- Elegant design.
- Glass installation kit included as standard.
- Protection guard on inlet side.
- Fitted with 230V 50 Hz motors, IP-X4 protection and class B as standard.
- Fully adjustable.
- Working temperatures from -20°C to +50°C.
- Model B: MATIC (with automatic blind).
- RA: Reversible with 5-speed adjuster.



CODE	MODEL	ø mm	Voltage (V)	Speed (r.p.m)	Input Power (W)	max. Amps (A)	Maximum AirFlow (m3/h)		Sound Pressure Level dB(A)	Weight (Kg)	Units per Box
							extract	intake			
00610000	B-23	230	230	1.350	45	0,19	825	530	49	5,19	1
00620000	B-30	305	230	1.260	90	0,39	1.900	700	51	7,45	1
00611003	B-23 RA	230	230	1.350	45	0,19	825	530	49	5,19	1
00621003	B-30 RA	305	230	1.260	90	0,39	1.900	700	51	7,45	1

DIMENSIONS mm



	A	B	C
B-23/RA	190	340	40
B-30/RA	230	420	40

